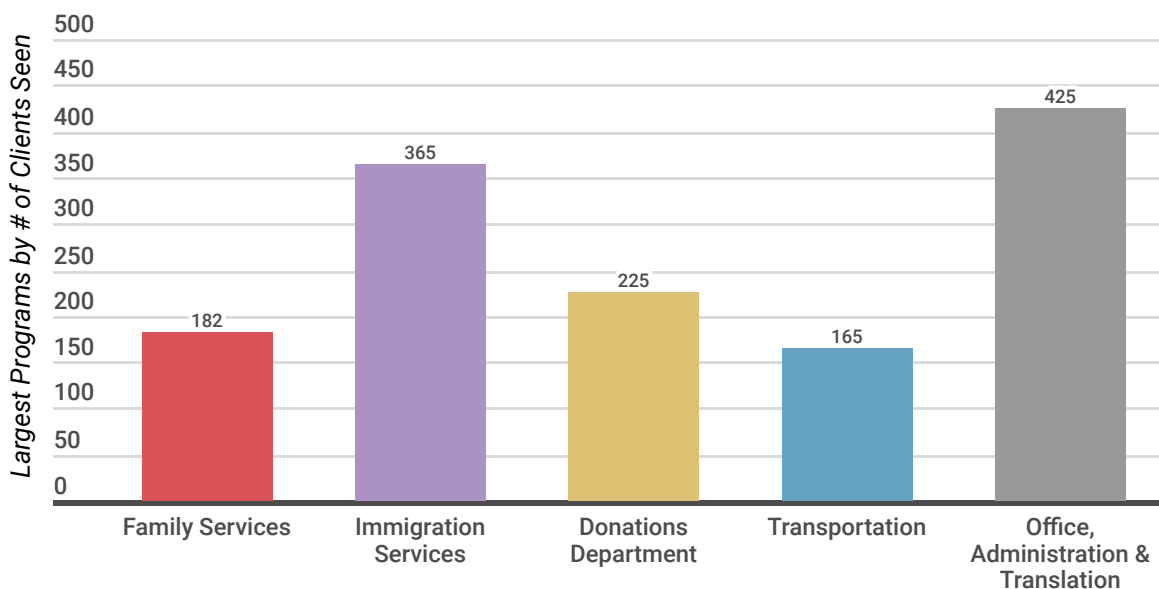
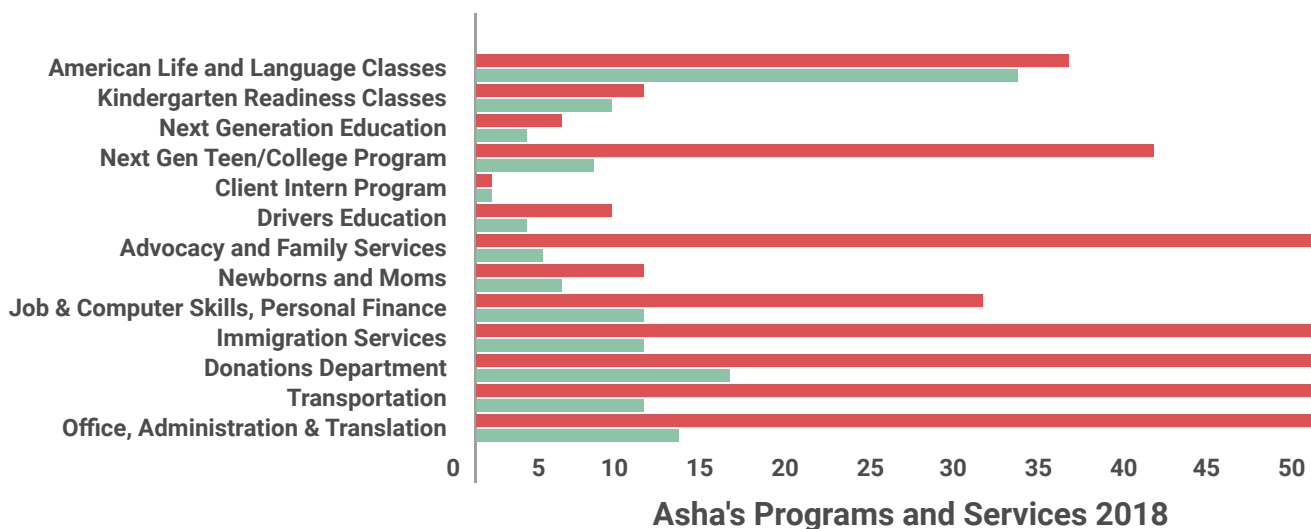


Asha's 2018 Report

Asha's Refuge has developed a variety of programs and services to meet specific client needs. Our office staff served over 400 clients throughout the 2018 year. Clients visiting our office need a variety of services which often require help from our group of language translators to enroll the clients and begin their services. Most of our clients are requesting assistance in reaching their goals with education, jobs, immigration services (such as completing and submitting required forms), healthcare, housing, driving, and childcare. A number of our clients seek help with food, clothing, toiletries and housing needs while working to obtain education and better jobs.



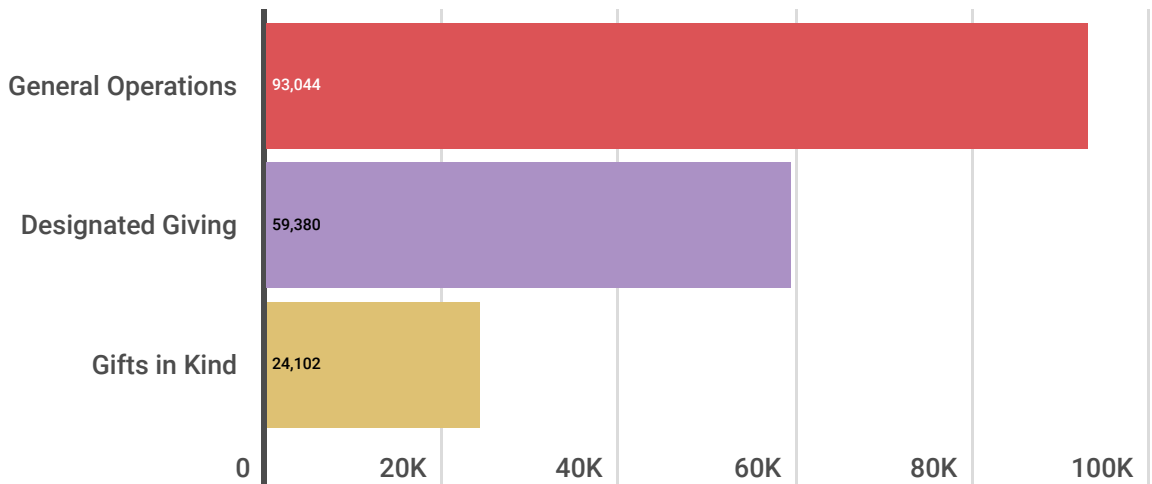
Our programs and services help to educate and mentor our clients as they begin their new life in America. We believe all people have a right to learn basic skills to live an independent and productive life of respect through God's love. Asha's Refuge volunteers are vital to the success of our clients and our organization. We currently need more volunteers in areas of client advocacy, immigration services, next gen education and office help. The five young adult clients we have in our High School Education class require one on one tutoring in various subjects. We have a need for volunteer lead teachers for the Next Gen Ed program.



● Clients ● Volunteers

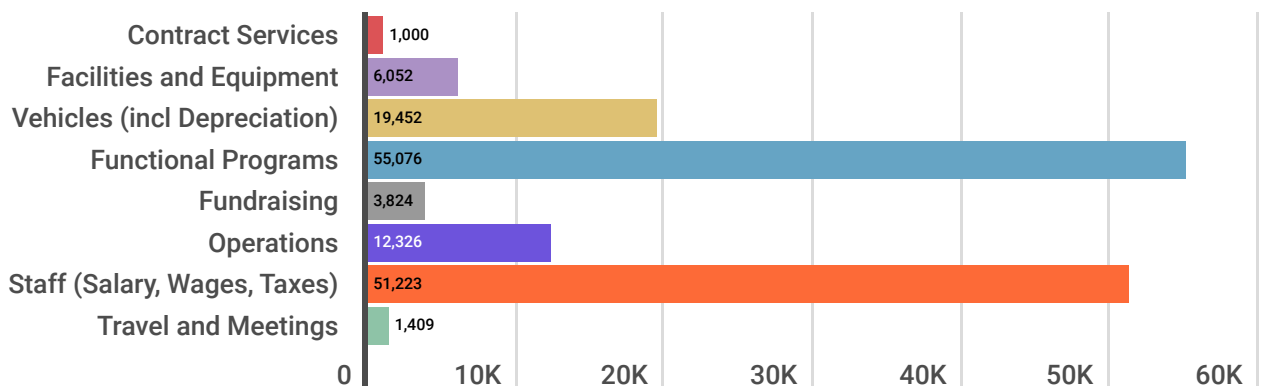
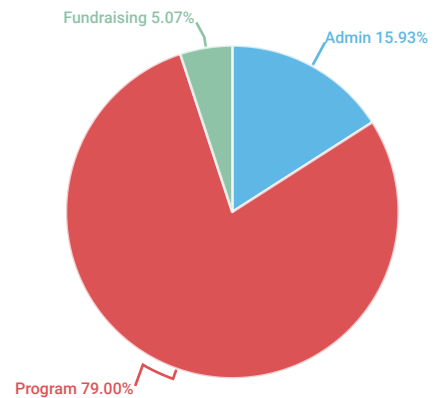
Asha's 2018 Report

We are grateful to have individual, corporate and church support that provides building space, financial resources and a lot of volunteer support which helps to drastically reduce overall costs. All of our programs and services benefit the refugee, asylee and Memphis community working together to assist newcomers. Asha's Refuge works in partnership with our client leaders, local schools, organizations and businesses to raise awareness about refugee and asylee situations through various speaking engagements. We hope to break down unfortunate and negative myths that often create unnecessary fear and division among people. Our clients are eager to work, be educated, provide for their families and give back to the community that has welcomed and helped them.



Asha's Income 2018

As we continue to grow and strengthen our programs, it will be important for us to locate and secure funding for adequate building space. We need to be located closer to the neighborhoods of our clients (Summer/Highland area preferred). Our existing programs and services require more offices and classrooms than we currently have. We need approximately 4,500-6,500 square feet of flexible space. The growth of our organization now also requires more funding for staff and operational support.



Asha's Expenses 2018